

SparkLAN Wireless LAN Adapter Quick installation Guide

Note: Do not insert the SparkLAN WLAN Adapter in your computer until you have finished installing the Utility and Driver.

Utility and Driver Installation

1. Turn “On” your computer. Insert the driver CD for the **SparkLAN WLAN Adapter** .The screen shown below will appear.



2. Click “Install Config Utilities.”



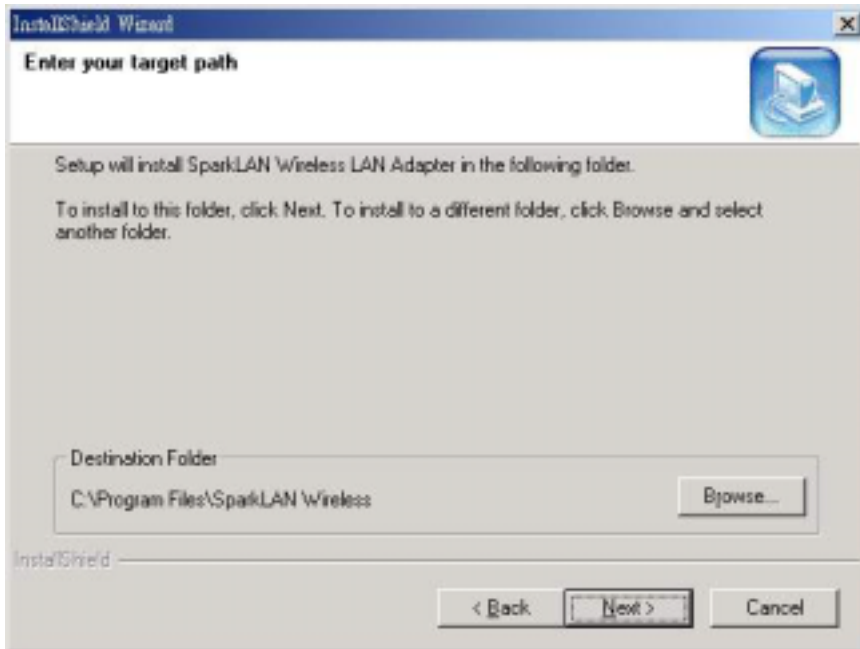
3. Click on the yellow bar with your product model name on it.



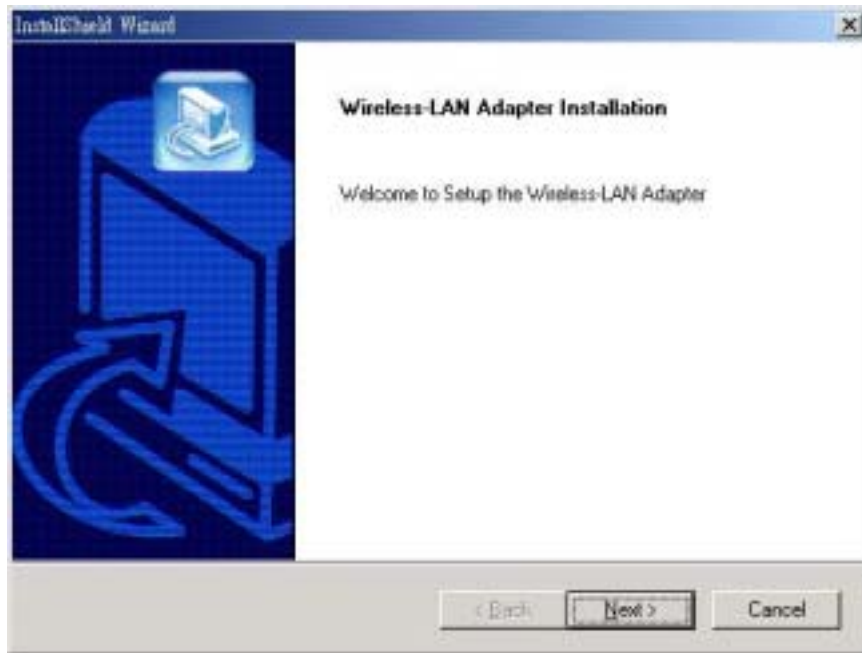
Note: Different model type has different multi-operation system

4. Click on your operation system.

For **98/2K/ME/XP**.The screen shown below will appear.

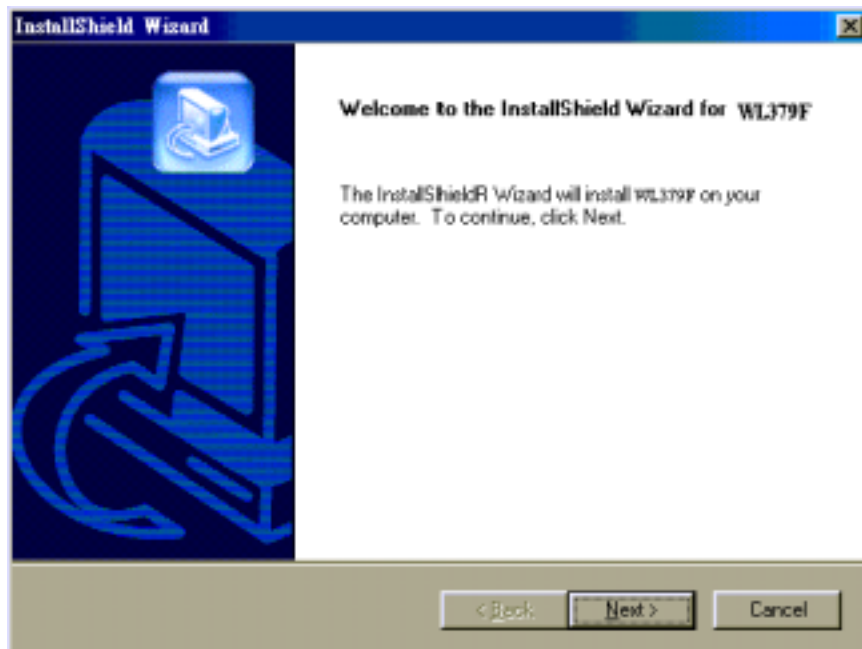


5. Click “Next” and then follow the instructions on the screen to continue the installation.



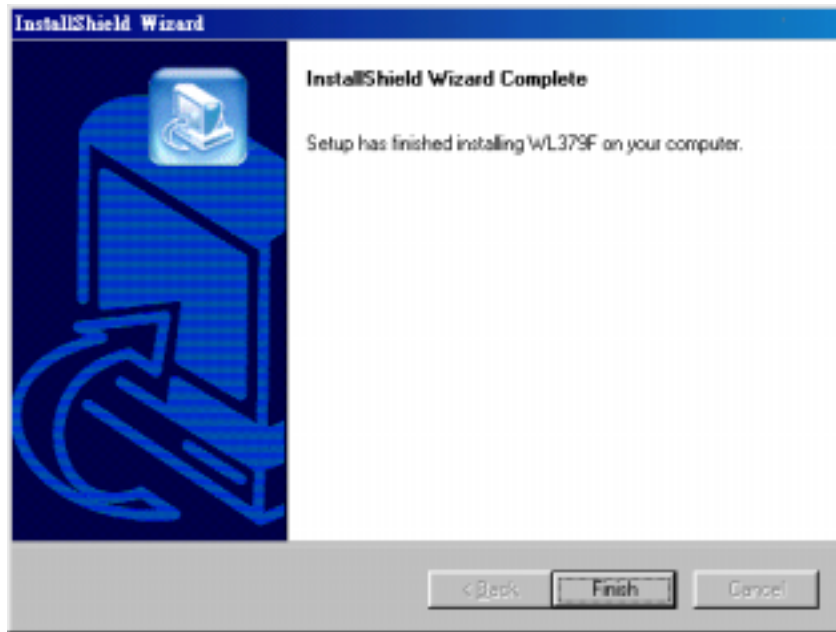
6. Click the Finish button in this screen; both the driver and the Configuration Utility are installed on your computer.

7. For installing with CE/Pocket PC2002, click on “CE”, the screen shown below will appear.



8. Click “Continue” and then follow the instructions on the screen to continue the installation.

Note: Requires CE or ActiveSync installed on the computer.



9. Click the Finish button in this screen; both the driver and the Configuration Utility are installed on your computer.

10. When click on “Linux”, it will launch file-explore to indicate where the driver is. Please open readme.txt file to install Linux driver.

Hardware Installation

For PCMCIA or USB adapters, simply insert or connect the adapter after running the exe file. **For PCI cards, you must shut down the computer, install the card in an available PCI slot, and restart the operating system.**

After the computer boots back up, it will detect the wireless card and then start the New Hardware Found wizard. Respond to the prompts displayed by the wizard, **but do not check the load driver from Specify Location check box**; the operating system will find the driver automatically.

For Windows CE, after installing the driver/utility, connect the PDA to the cradle, and connect the cradle to the computer. ActiveSync will load the driver to the PDA. Insert the wireless CF card when prompted.

You can launch the Configuration Utility by clicking the left mouse button on the Configuration Utility icon and selecting Advanced Configuration.



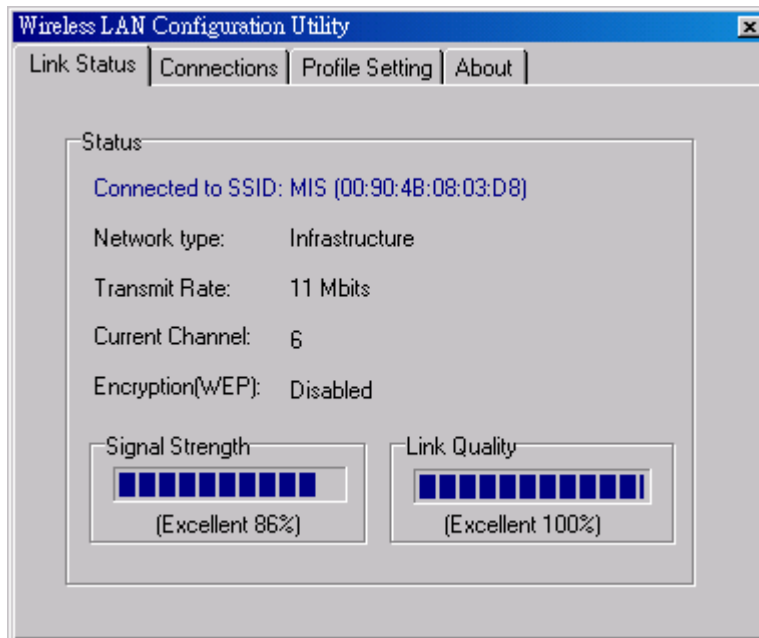
Configuration Utility Icon

If the Configuration Utility icon is not displayed in the System Tray, you can restart the Configuration Utility from the Start Menu by selecting Programs and WLAN-Utility Configuration.

The Configuration Utility consists of window with four tabs: Link Status Connections, Profile Setting, and About. Please find information about these tabs in the User's Guide (from the CD Auto-run menu, select User's Guide and then select the product).

Wireless Network Setup

1. **Peer-to-Peer:** Connects with other wireless client(s). This does not require Access Point. Please make sure the "Network Name" (SSID or ESSID) and "Peer-to-Peer" channel are the same for all clients in the same wireless network. Double click on the Configuration Utility icon to open the utility. Click on "Configuration" tab and input the desired "Network Name". At "Network Type", click on the drop-down arrow and select "Peer-to-Peer", and then at "Peer-to-Peer Channel", use the up/down arrows to select the channel number, and then click "Apply".



2. **Access Point:** Connects to wired Ethernet network via Access Point. Connects your Access Point to the Ethernet network connection and configure the Access Point with desired "Network Name" (SSID or ESSID). On the

wireless client, in Utility's "Configuration" page, input the same "Network Name" as the Access Point. At "Network Type", click on the drop-down arrow, and select "Access Point", and then click "Apply".